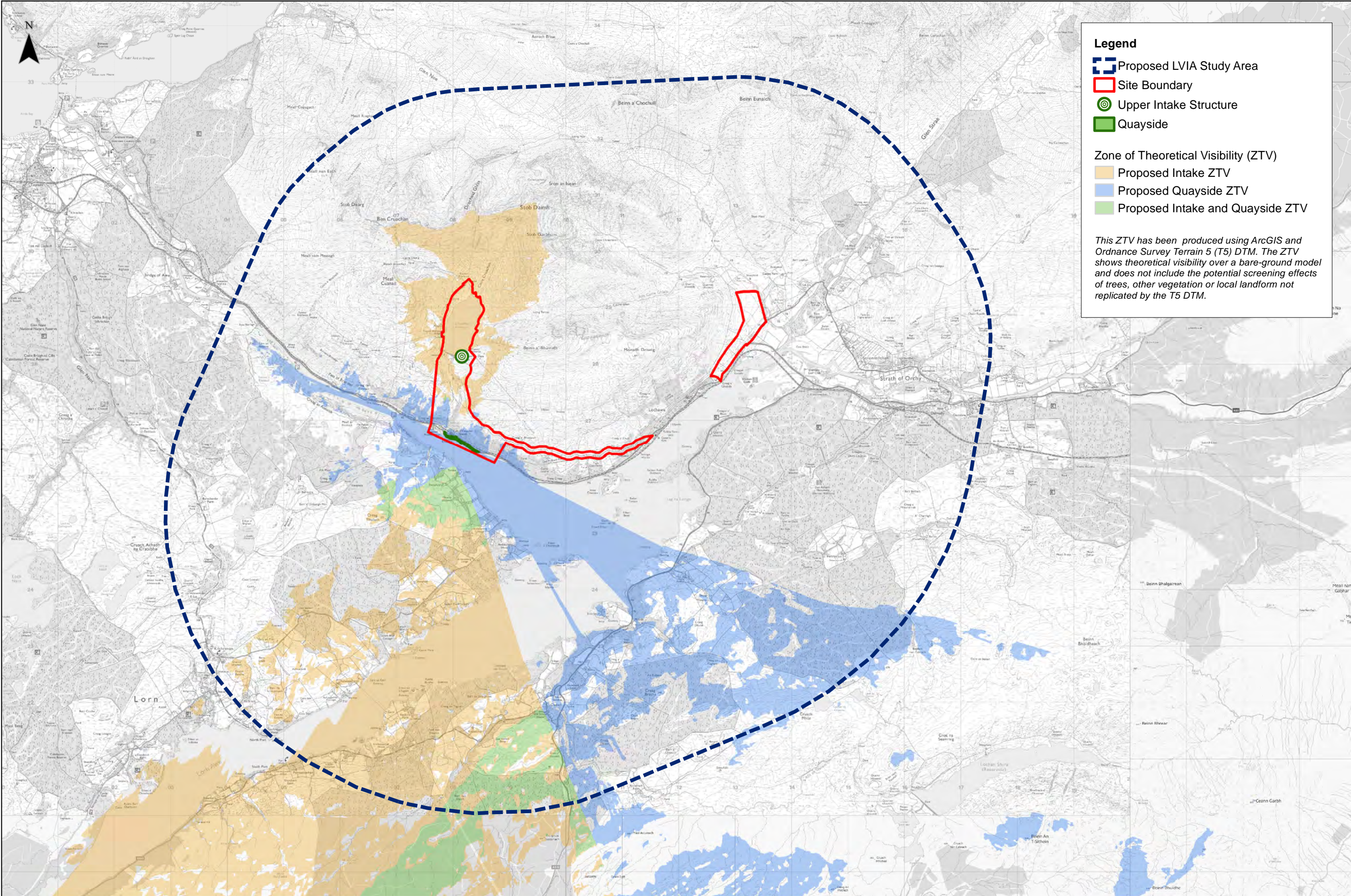


Appendix 11.1 – LVIA Figures and Photomontages



Legend

Proposed LVIA Study Area

Site Boundary

Upper Intake Structure

Quayside

Zone of Theoretical Visibility (ZTV)

Proposed Intake ZTV

Proposed Quayside ZTV

Proposed Intake and Quayside ZTV

This ZTV has been produced using ArcGIS and Ordnance Survey Terrain 5 (T5) DTM. The ZTV shows theoretical visibility over a bare-ground model and does not include the potential screening effects of trees, other vegetation or local landform not replicated by the T5 DTM.



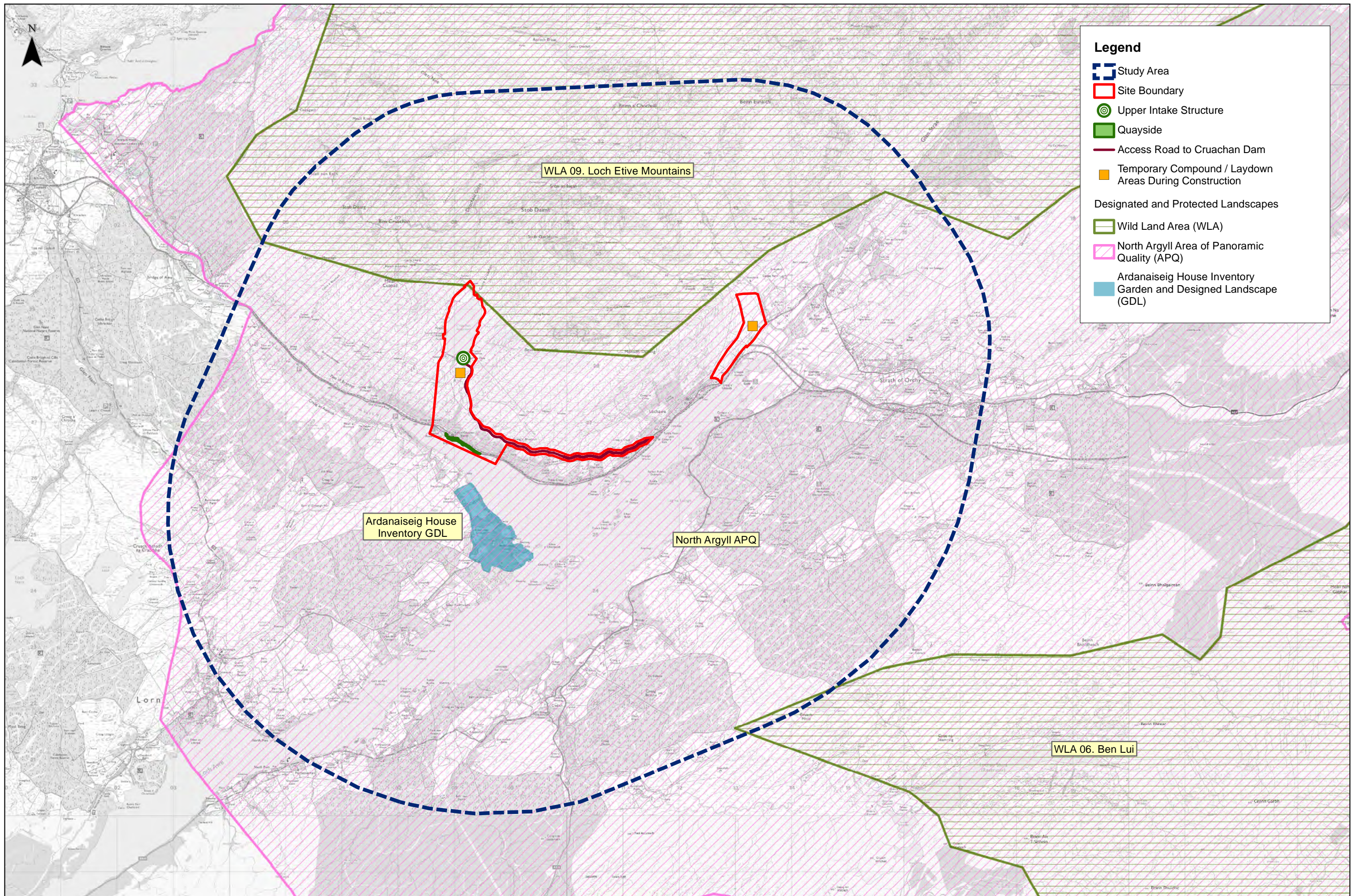
CRUACHAN EXPANSION PROJECT

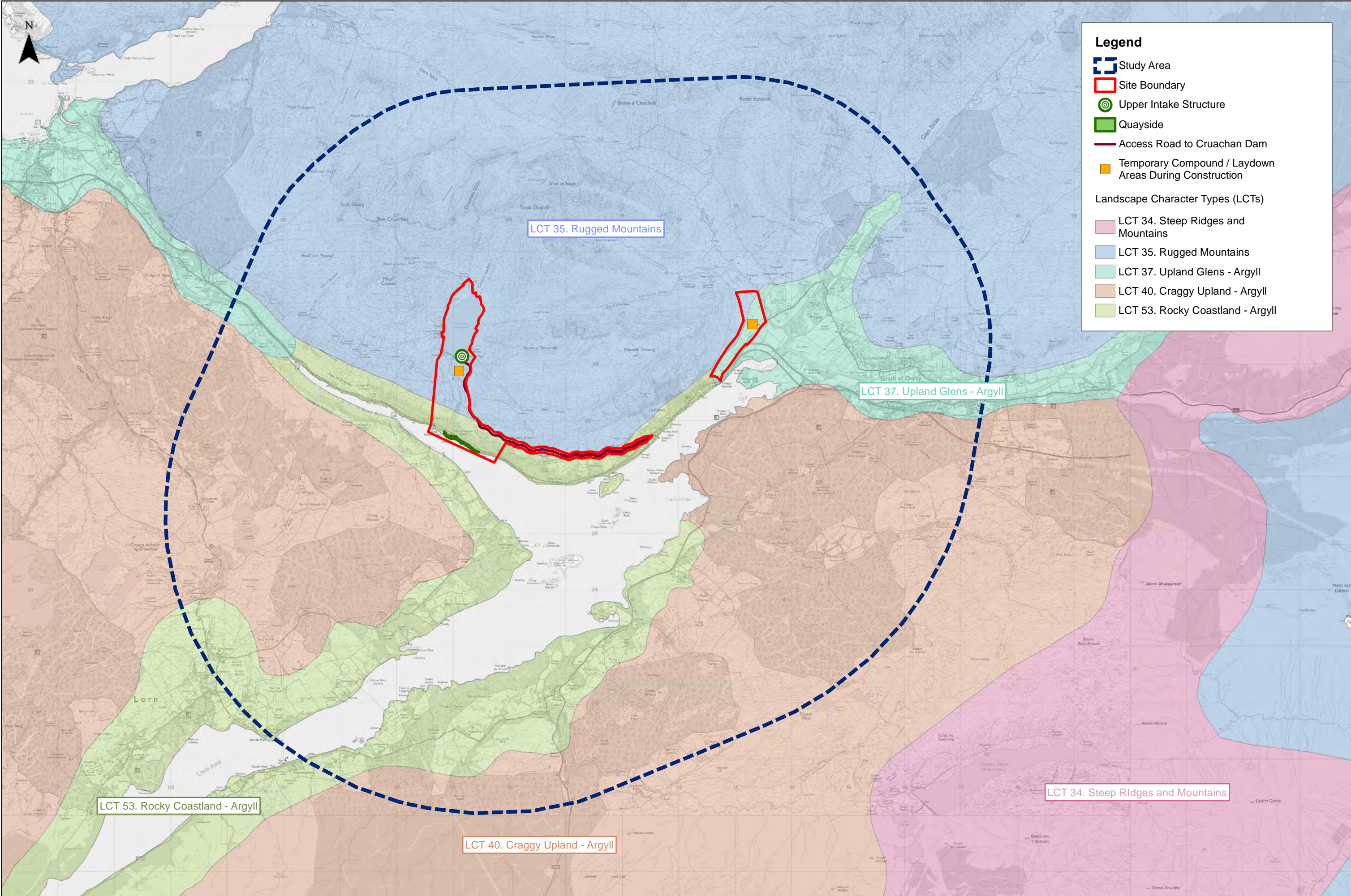
Zone of Theoretical Visibility (ZTV)



1:60,000 @ A3	Date: 1G01 /2022
Drawn: LV	Checked: EM
Figure 11.1	Rev F001

Contains Ordnance Survey data (c) Crown copyright and database right 2022.





Legend

Study Area

Site Boundary

Upper Intake Structure

Quayside

Access Road to Cruachan Dam

Temporary Compound / Laydown Areas During Construction

Landscape Character Types (LCTs)

LCT 34. Steep Ridges and Mountains

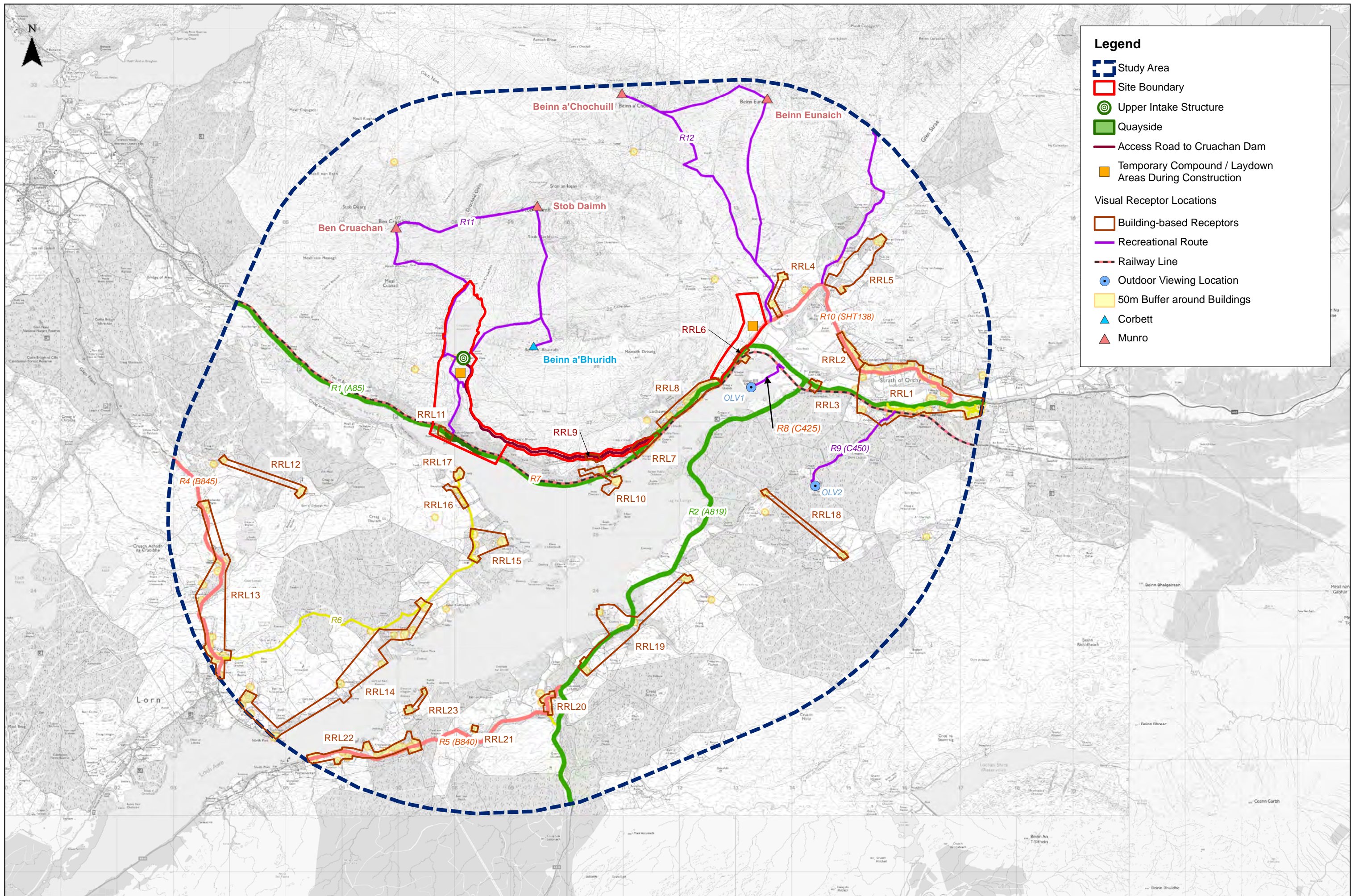
LCT 35. Rugged Mountains

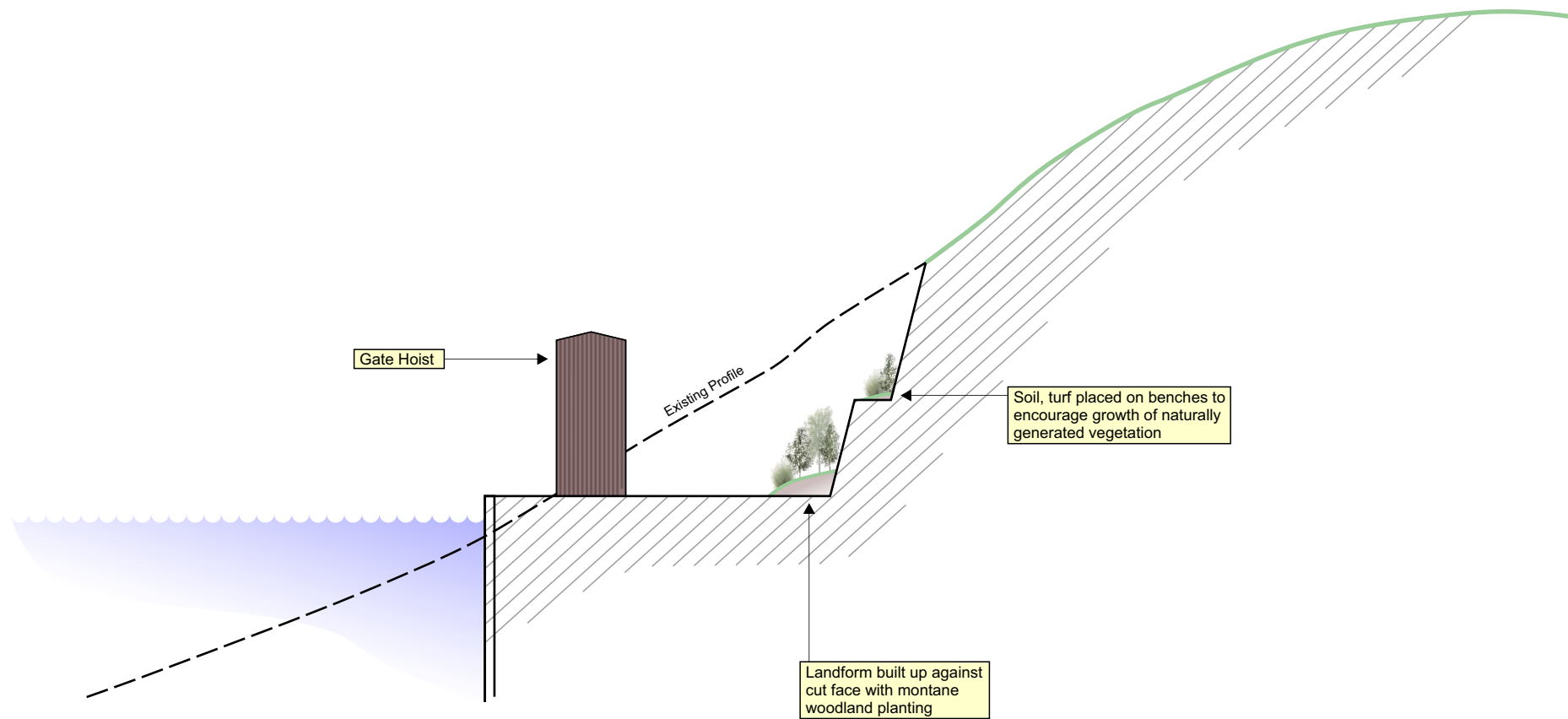
LCT 37. Upland Glens - Argyll

LCT 40. Craggy Upland - Argyll

LCT 53. Rocky Coastland - Argyll

Contains Ordnance Survey data (c) Crown copyright and database right 2022.

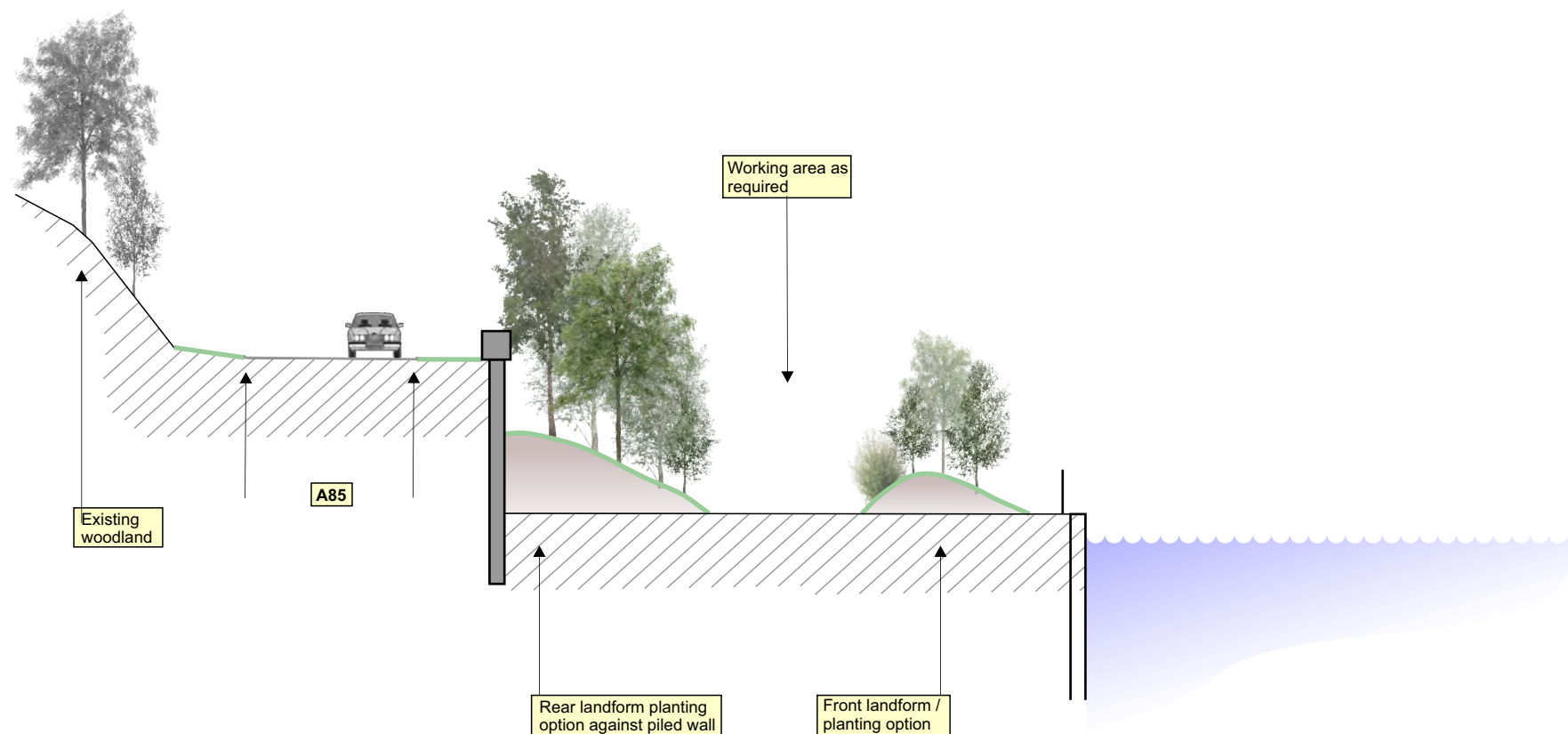




Indicative Mitigation Options: Upper Intake Area (not to scale)



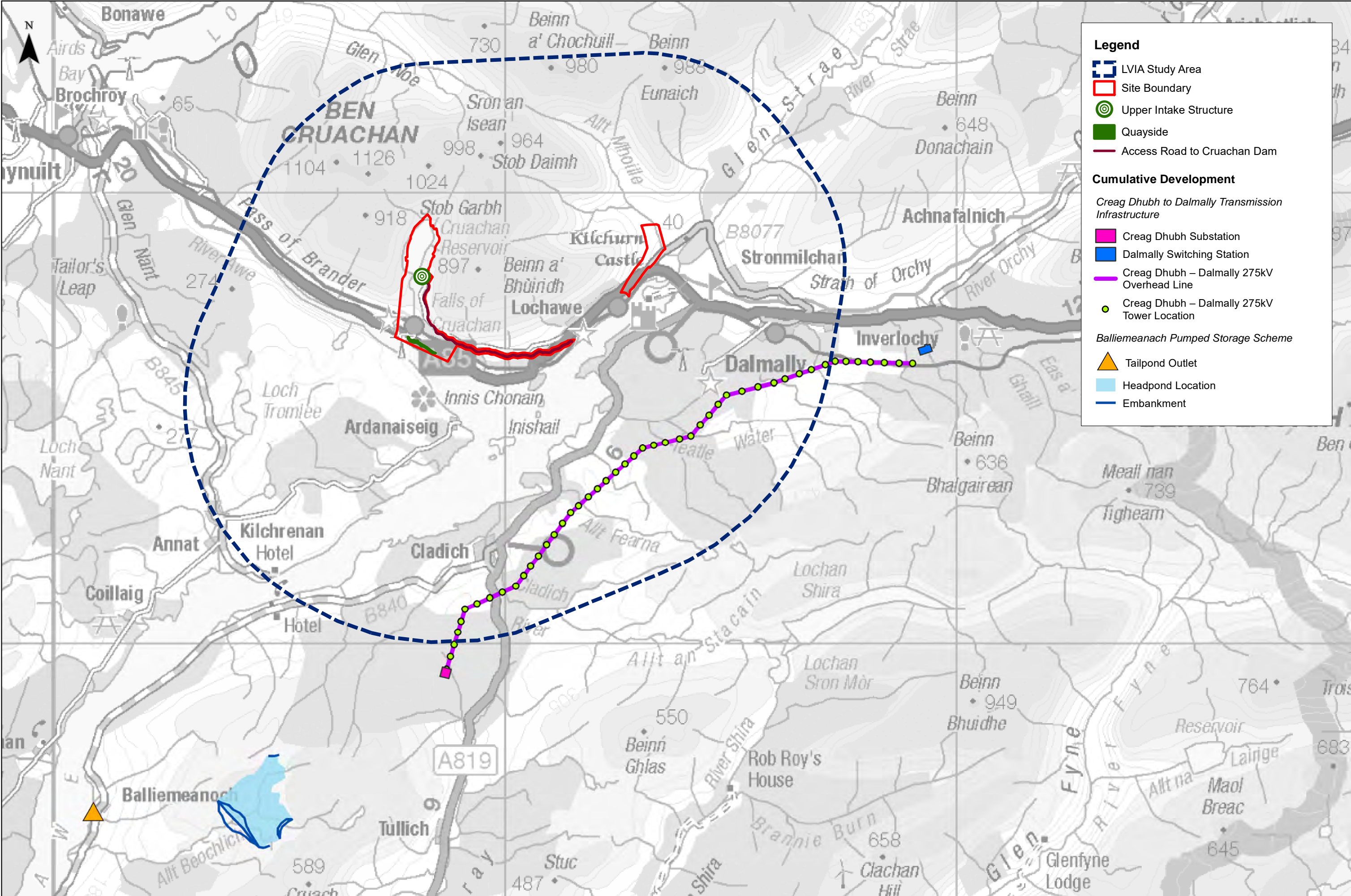
Examples of new landform created against cut rock face at Glendoe Tailrace



Indicative Mitigation Options for Quayside (not to scale)



Examples of vegetation growth on rock cutting at A82, near Tarbet (source: Google StreetView)



Legend

LVIA Study Area

Site Boundary

Upper Intake Structure

Quayside

Access Road to Cruachan Dam

Cumulative Development

Creag Dhubh to Dalmally Transmission Infrastructure

Creag Dhubh Substation

Dalmally Switching Station

Creag Dhubh – Dalmally 275kV Overhead Line

Creag Dhubh – Dalmally 275kV Tower Location

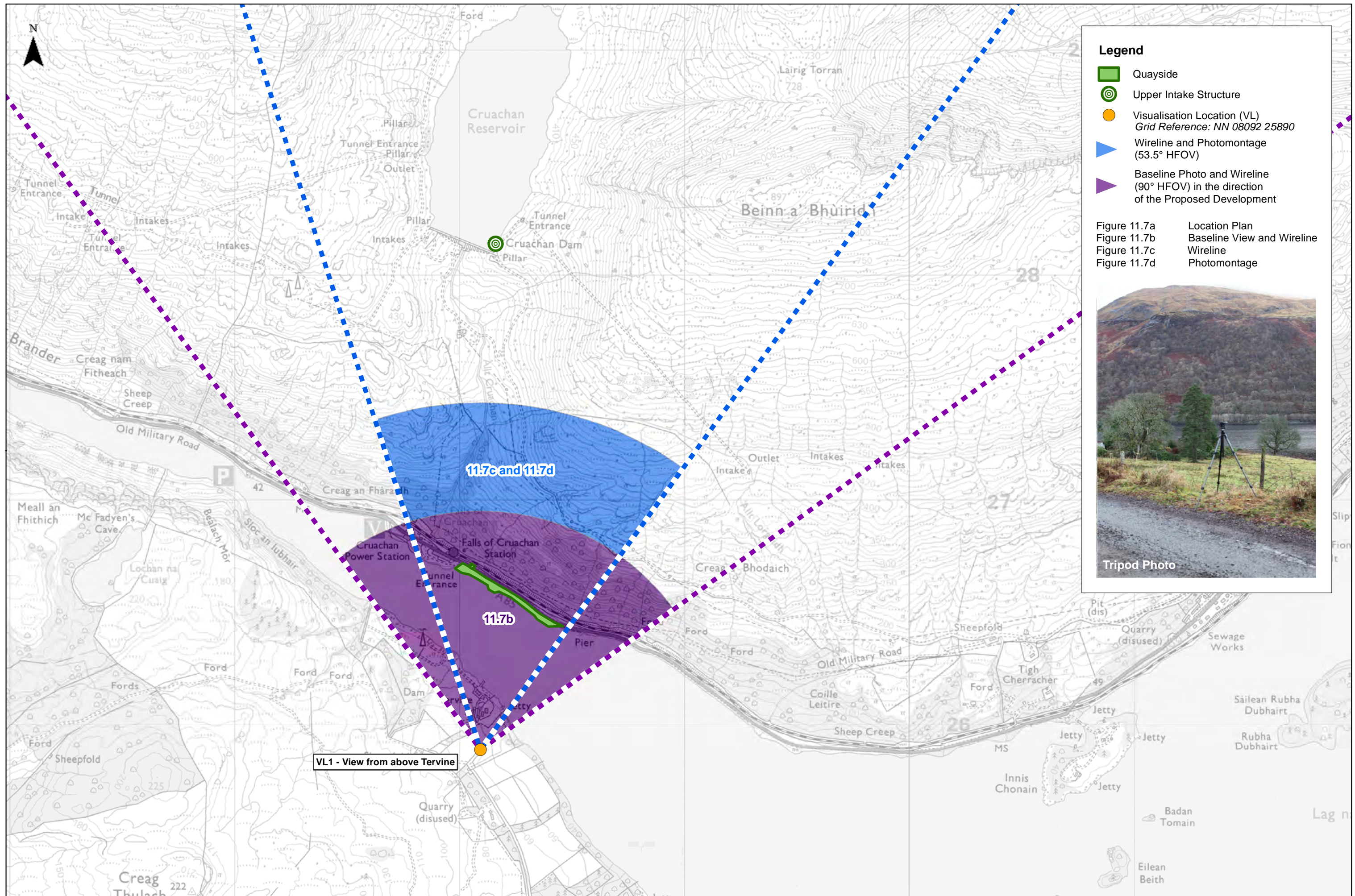
Balliemore Pumped Storage Scheme

Tailpond Outlet

Headpond Location

Embankment

Contains Ordnance Survey data (c) Crown copyright and database right 2022.



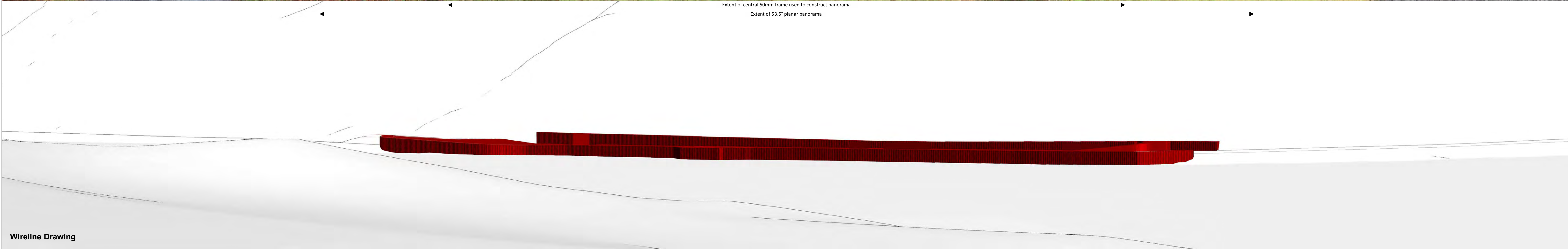
Tripod Photo

Figure 11.7a Location Plan
Figure 11.7b Baseline View and Wireline
Figure 11.7c Wireline
Figure 11.7d Photomontage



Baseline Photograph

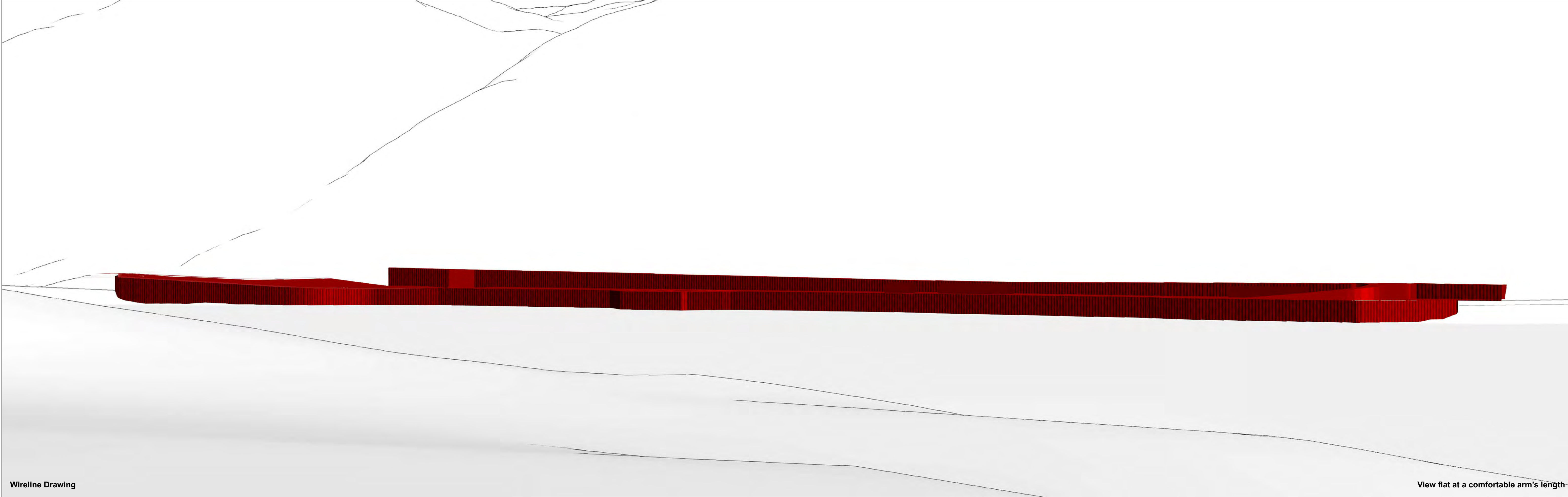
This image provides landscape and visual context only



Wireline Drawing

Cruachan Expansion Project
Figure 11.7b – Visualisation of Proposed Quayside Structure from above Tervine: Baseline View and Wireline

OS reference:	208092 E 725890 N	Camera:	Canon EOS 5D mk II	Horizontal field of view:	90° (cylindrical projection)
Ground level:	61.7 m AOD	Lens:	50mm (Canon EF 50mm f/1.4)	Principal distance:	522 mm
Direction of view:	9°	Camera height:	1.5m AGL		
Distance to Proposed Development:	1001.5 m	Date and time:	27/01/2022 11:05		



Wireline Drawing

View flat at a comfortable arm's length

Cruachan Expansion Project
Figure 11.7c – Visualisation of Proposed Quayside Structure from above Tervine: Wireline

OS reference:	208092 E 725890 N	Horizontal field of view:	53.5° (planar projection)
Ground level:	61.7 m AOD	Principal distance:	812.5 mm
Direction of view:	9°	Paper size:	841 x 297 mm (half A1)
Distance to Proposed Development:	1001.5 m	Correct printed image size:	820 x 260 mm

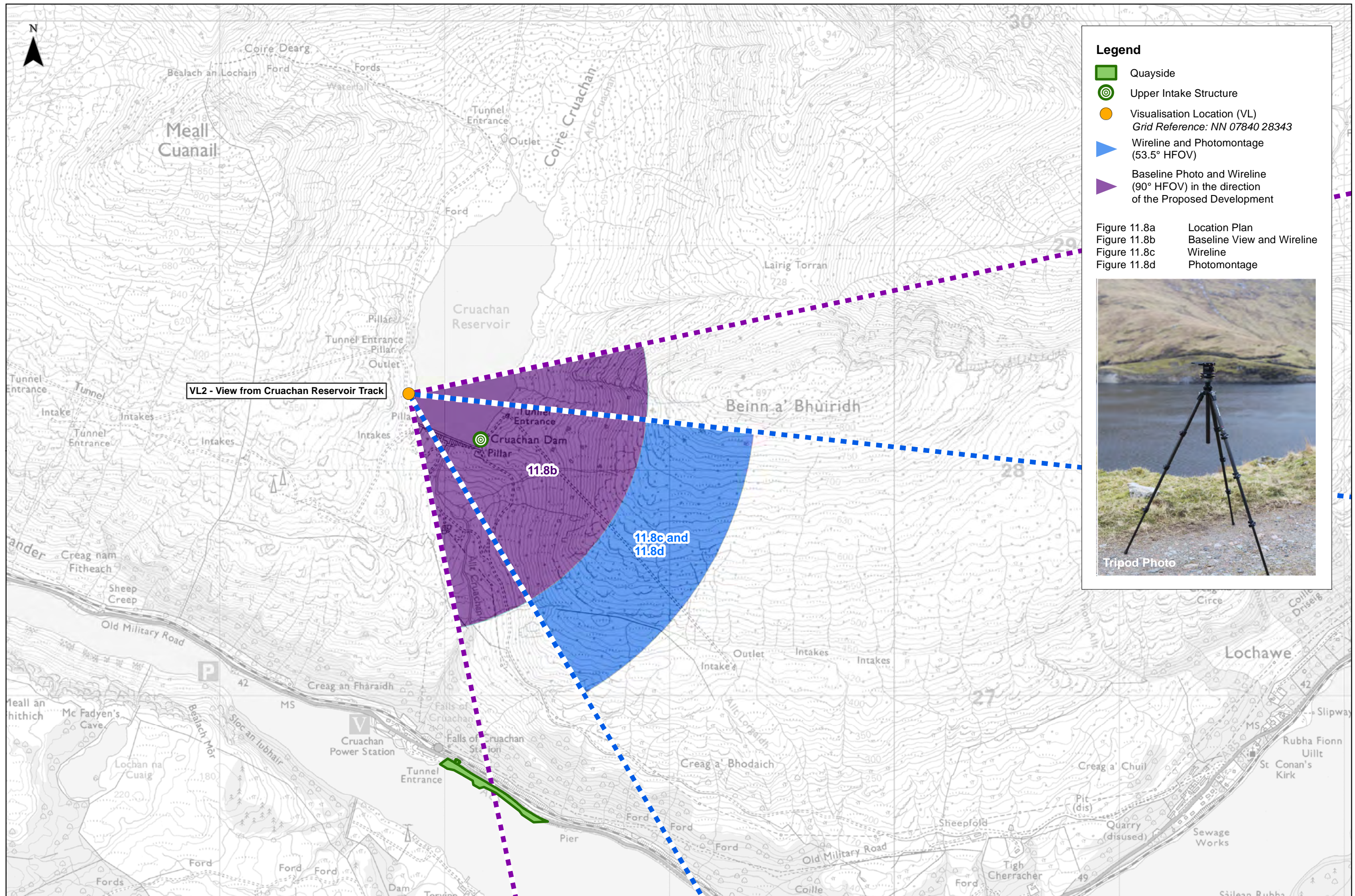


Photomontage

View flat at a comfortable arm's length

Cruachan Expansion Project
Figure 11.7d – Visualisation of Proposed Quayside Structure from above Tervine: Photomontage (10 Years After Completion)

NOTE: This photomontage shows the anticipated situation during operation, after 10 years. The positioning and growth of vegetation is estimated and indicative.	OS reference:	208092 E 725890 N	Camera:	Canon EOS 5D mk II	Horizontal field of view:	53.5° (planar projection)
	Ground level:	61.7 m AOD	Lens:	50mm (Canon EF 50mm f/1.4)	Principal distance:	812.5 mm
	Direction of view:	9°	Camera height:	1.5m AGL	Paper size:	841 x 297 mm (half A1)
	Distance to Proposed Development:	1001.5 m	Date and time:	27/01/2022 11:05	Correct printed image size:	820 x 260 mm



Legend

- Quayside
- Upper Intake Structure
- Visualisation Location (VL)
Grid Reference: NN 07840 28343
- Wireline and Photomontage
(53.5° HFOV)
- Baseline Photo and Wireline
(90° HFOV) in the direction
of the Proposed Development

Figure 11.8a
Figure 11.8b
Figure 11.8c
Figure 11.8d

Location Plan
Baseline View and Wireline
Wireline
Photomontage





Cruachan Expansion Project
Figure 11.8b – Visualisation of Proposed Upper Intake Structure from Cruachan Reservoir Track: Baseline View and Wireline

OS reference:	207840 E 728343 N	Camera:	Canon EOS 5D mk II	Horizontal field of view:	90° (cylindrical projection)
Ground level:	414.9 m AOD	Lens:	50mm (Canon EF 50mm f/1.4)	Principal distance:	522 mm
Direction of view:	114°	Camera height:	1.5m AGL		
Distance to Proposed Development:	380.1 m	Date and time:	02/03/2022 13:27		



Wireline Drawing

View flat at a comfortable arm's length

Cruachan Expansion Project
Figure 11.8c – Visualisation of Proposed Upper Intake Structure from Cruachan Reservoir Track: Wireline

OS reference:	207840 E 728343 N	Horizontal field of view:	53.5° (planar projection)
Ground level:	414.9 m AOD	Principal distance:	812.5 mm
Direction of view:	114°	Paper size:	841 x 297 mm (half A1)
Distance to Proposed Development:	380.1 m	Correct printed image size:	820 x 260 mm



Photomontage

View flat at a comfortable arm's length

Cruachan Expansion Project
Figure 11.8d – Visualisation of Proposed Upper Intake Structure from Cruachan Reservoir Track: Photomontage (10 Years After Completion)

NOTE: This photomontage shows the anticipated situation during operation, after 10 years. The positioning and growth of vegetation is estimated and indicative.

OS reference:	207840 E 728343 N	Camera:	Canon EOS 5D mk II	Horizontal field of view:	53.5° (planar projection)
Ground level:	414.9 m AOD	Lens:	50mm (Canon EF 50mm f/1.4)	Principal distance:	812.5 mm
Direction of view:	114°	Camera height:	1.5m AGL	Paper size:	841 x 297 mm (half A1)
Distance to Proposed Development:	380.1 m	Date and time:	02/03/2022 13:27	Correct printed image size:	820 x 260 mm